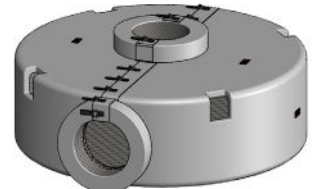
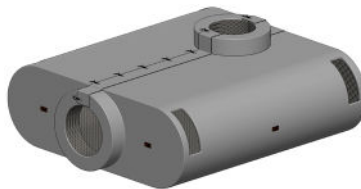
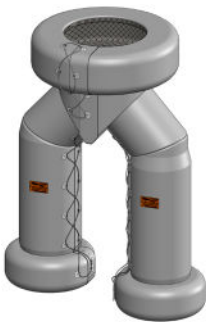


REMOVABLE THERMAL INSULATION COVER CATALOG



YOUR EXHAUST SYSTEM COMPONENTS SOLUTION



For products not included in the catalog, please contact us for a quote.

Rev030421-A



Manufacturer of the Year



ISO 9001:2015 Certified

inExhaust has over 50 years' combined experience in exhaust system manufacturing, power generation, emissions, and the oil and gas industries. Innovative Exhaust Solutions, Inc was established in 2016 by Juan Breucop and Mike Rodriguez.

CONTACT



402-322-7022



402-322-7032



Sales@inExhaust.com



4010 NW 39th Street | Lincoln, NE | 68524 | USA



www.inExhaust.com

All dimensions are in inches. All weights are approximate and in pounds.

*Special items are not refundable. All catalog items are standard sizing. Call factory for pricing on non-standard items.
Contents subject to change without notice. Minimum order amount \$50.*

©2016-2021 Innovative Exhaust Solutions, Inc. Lincoln, NE USA
Unauthorized reproduction in full or part is strictly prohibited. | Rev030220-D



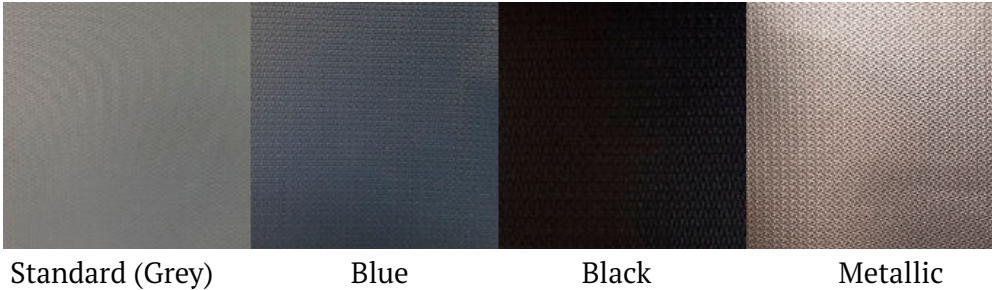
Description/Family	Page
Part Number Schema	4
Specifications	5
Removable Thermal Insulation Covers	
Tubing - 110	6
Flex Hose - 121	6
Expansion Joints - Bellows - 123	6
Elbows - Formed & Mitred - 130, 131M, 133, 135, 136	7
Flanges	
ANSI - 160	9
Wye Connectors	
Caterpillar - 50	
3508 B, 3512 C	10
3516 C, 3516 Quad Turbo	11
Cummins - 51	
QST 30, QSK 50	12
ANSI - 51	
QSK 60	13
QSK 78	14
Silencers	
Slim Series	15
Disk Series	16
Disk Series - Spark Arresting	17
Cylindrical Series	18
Cylindrical Series - Spark Arresting	19
Installation Guide	20
Terms & Conditions	21
Standard Warranty	23

By default, catalog shows Wrap Velcro (WV).
For Spring or Q-Hook, substitute WV with
WS (Wrap Spring) or WH (Q-Hook)

130-WV-120-L12H12

FAMILY NUMBERS	
50, 110, 121-123, 130-133, 135, 136, 160	
ABBREVIATIONS	
L	Length
H	Height
NS	Nominal Size
WV	Wrap Velcro
WS	Wrap Spring
WH	Wrap Q-Hooks

AVAILABLE COLORS



	SPRING/LOOP (WS)	VELCRO/BELTS (WV)	Q-HOOKS (WH)
			
Temperature Range	20 °F – 1100 °F	20 °F – 1100 °F	20 °F – 1100 °F
Surface Temperature	Up to 1000 °F	Up to 1000 °F	Up to 1000 °F
Loss in weight @1200 °F	Up to 2%	Up to 2%	Up to 2%
Thickness	Approximately 1.00”	Approximately 1.00”	Approximately 1.00”
Insulation	Type “E” Fiberglass (Asbestos Free)	Type “E” Fiberglass (Asbestos Free)	Type “E” Fiberglass (Asbestos Free)
Density	11lbs/cft	11lbs/cft	11lbs/cft
Outer Jacket	17oz Silicone Coated Thermal Cloth	17oz Silicone Coated Thermal Cloth	17oz Silicone Coated Thermal Cloth
Inner Jacket	304 SS Wire Mesh	Vermiculite 18 oz	304 SS Wire Mesh
Attachment	SS Spring/Loop System	Flame resistant Velcro strips & belts with SS double D-rings	SS Quilting anchors & SS Tie Wire
Fire Resistance	Incombustible	Incombustible	Incombustible
Moisture Absorption	Negligible	Negligible	Negligible
Softening Point	1500 °F	1500 °F	1500 °F
Strain Point	1100 °F	1100 °F	1100 °F
Annealing Point	1200 °F	1200 °F	1200 °F

TUBING, FLEX, BELLOWS

TUBING	
PART NUMBER	TUBING OD
110-WV-030-L12	3
110-WV-035-L12	3.5
110-WV-040-L12	4
110-WV-050-L12	5
110-WV-060-L12	6
110-WV-080-L12	8
110-WV-100-L12	10
110-WV-120-L12	12
110-WV-140-L12	14
110-WV-160-L12	16
110-WV-180-L12	18
110-WV-200-L12	20
110-WV-220-L12	22
110-WV-240-L12	24
110-WV-260-L12	26
110-WV-280-L12	28
110-WV-300-L12	30
110-WV-360-L12	36

FLEX	
PART NUMBER	FLEX NOMINAL SIZE
121-WV-030-L12	3
121-WV-035-L12	3.5
121-WV-040-L12	4
121-WV-050-L12	5
121-WV-060-L12	6
121-WV-080-L12	8
121-WV-100-L12	10
121-WV-120-L12	12

BELLOWS	
PART NUMBER	BELLOWS NOMINAL SIZE
123-WV-030-L13	3
123-WV-035-L13	3.5
123-WV-040-L13	4
123-WV-050-L15	5
123-WV-060-L17	6
123-WV-080-L17	8
123-WV-100-L17	10
123-WV-120-L17	12
123-WV-140-L17	14
123-WV-160-L17	16
123-WV-180-L17	18
123-WV-200-L17	20
123-WV-220-L17	22
123-WV-240-L17	24
123-WV-260-L17	26
123-WV-280-L17	28
123-WV-300-L17	30
123-WV-360-L17	36

TUBING, FLEX, BELLOWS



Wrap Velcro
(WV)



Wrap Q-Hooks
(WH)



Wrap Spring
(WS)



ELBOWS

90° Formed Elbow Short Radius, Tangent Cut

PART NUMBER	ELBOW OD
130-WV-030-L3H3	3
130-WV-035-L3.5H3.5	3.5
130-WV-040-L4H4	4
130-WV-050-L5H5	5
130-WV-060-L6H6	6
130-WV-080-L8H8	8
130-WV-100-L10H10	10
130-WV-120-L12H12	12



Wrap Velcro
(WV)



Wrap Q-Hooks
(WH)



Wrap Spring
(WS)



Wrap Velcro
(WV)



Wrap Q-Hooks
(WH)



Wrap Spring
(WS)

90° Mitred Elbow Short Radius

PART NUMBER	ELBOW OD
131M-WV-080-L8H8	8
131M-WV-100-L10H10	10
131M-WV-120-L12H12	12
131M-WV-140-L14H14	14
131M-WV-160-L16H16	16
131M-WV-180-L18H18	18
131M-WV-200-L20H20	20
131M-WV-220-L22H22	22
131M-WV-240-L24H24	24
131M-WV-260-L26H26	26
131M-WV-280-L28H28	28
131M-WV-300-L30H30	30

ELBOWS

90° Formed Elbow Long Radius

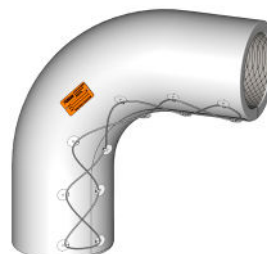
PART NUMBER	ELBOW OD
133-WV-030-L8H8	3
133-WV-035-L9H9	3.5
133-WV-040-L11H11	4
133-WV-050-L14.5H14.5	5
133-WV-060-L17H17	6



Wrap Velcro
(WV)



Wrap Spring
(WS)



Wrap Q-Hooks
(WH)

45° Formed Elbow Short Radius, Tangent Cut

PART NUMBER	ELBOW OD
135-WV-030	3
135-WV-035	3.5
135-WV-040	4
135-WV-050	5
135-WV-060	6
135-WV-080	8
135-WV-100	10
135-WV-120	12



Wrap Velcro
(WV)



Wrap Spring
(WS)



Wrap Q-Hooks
(WH)

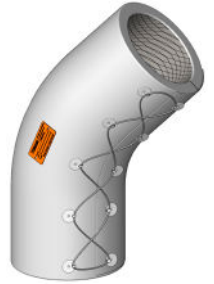
ELBOWS & FLANGES

45° Formed Elbow Long Radius

PART NUMBER	ELBOW OD
136-WV-030-L12	3
136-WV-035-L14	3.5
136-WV-040-L12	4
136-WV-045-L12	4.5
136-WV-050-L28	5
136-WV-056-L28	5.56
136-WV-060-L20	6



Wrap Velcro
(WV)



Wrap Q-Hooks
(WH)



Wrap Spring
(WS)



Wrap Velcro
(WV)



Wrap Q-Hooks
(WH)



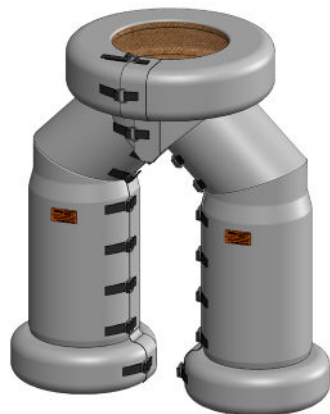
Wrap Spring
(WS)

ANSI FLANGE

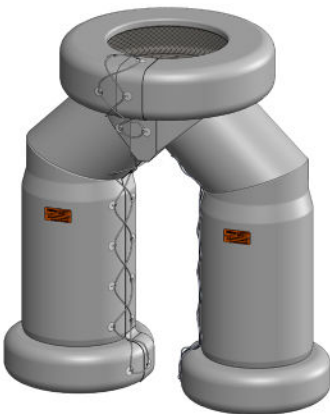
PART NUMBER	FLANGE NOMINAL SIZE
160-WV-030	3
160-WV-035	3.5
160-WV-040	4
160-WV-050	5
160-WV-060	6
160-WV-080	8
160-WV-100	10
160-WV-120	12
160-WV-140	14
160-WV-160	16
160-WV-180	18
160-WV-200	20
160-WV-220	22
160-WV-240	24
160-WV-260	26
160-WV-280	28
160-WV-300	30

3508 B, 3512 C

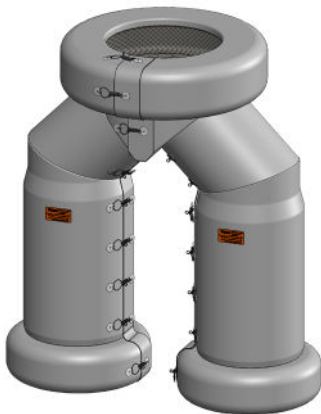
3508 B Dual 6" Caterpillar Flange Inlets	
PART NUMBER	WYE SIZES
WV-50-1208-3508-H36	8 x 8 x 12



Wrap Velcro
(WV)



Wrap Q-Hooks
(WH)

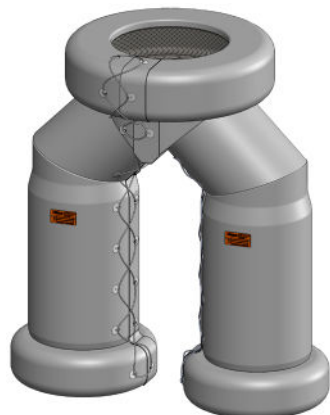


Wrap Spring
(WS)

3512 C Dual 8" Caterpillar Flange Inlets	
PART NUMBER	WYE SIZES
WV-50-1408-3512C-H36	8 x 8 x 14
WV-50-1410-3512C-H36	10 x 10 x 14
WV-50-1608-3512C-H36	8 x 8 x 16
WV-50-1610-3512C-H36	10 x 10 x 16



Wrap Velcro
(WV)



Wrap Q-Hooks
(WH)



Wrap Spring
(WS)

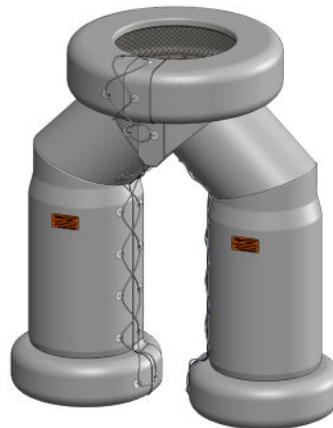
3516 C, 3516 QUAD TURBO

3516 C - Dual 8" Caterpillar Flange Inlets

PART NUMBER	WYE SIZES
WV-50-1608-3516C-H36	8 x 8 x 16
WV-50-1610-3516C-H36	10 x 10 x 16
WV-50-1808-3516C-H36	8 x 8 x 18
WV-50-1810-3516C-H36	10 x 10 x 18



Wrap Velcro
(WV)



Wrap Q-Hooks
(WH)



Wrap Spring
(WS)

3516 Quad Turbo - Dual 8" Caterpillar Flange Inlets

PART NUMBER	WYE SIZES
10 x 10 x 14	WV-50-1410-3516QT-H36
10 x 10 x 16	WV-50-1610-3516QT-H36
10 x 10 x 18	WV-50-1810-3516QT-H36



Wrap Velcro
(WV)



Wrap Q-Hooks
(WH)



Wrap Spring
(WS)

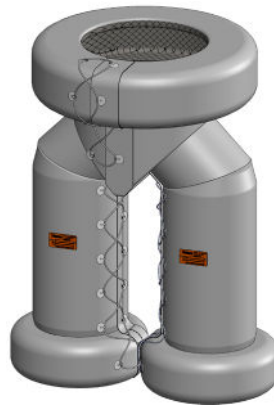
QST 30, QSK 50

QST 30 - Floating Cummins Flange Inlets

PART NUMBER	GEN SET MODEL	WYE SIZES
WV-51-1006-T30FAA-H32	DQFAA 750	6 x 6 x 10
WV-51-1006-T30FAB-H32	DQFAB 800	6 x 6 x 10
WV-51-1206-T30FAC-H32	DQFAC 900	6 x 6 x 12
WV-51-1406-T30FAD-H32	DQFAD 1000	6 x 6 x 14



Wrap Velcro
(WV)



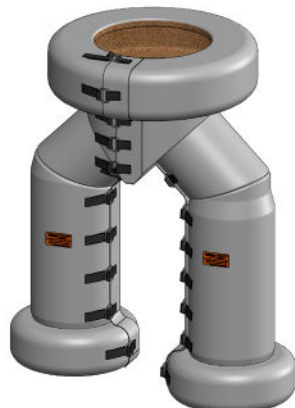
Wrap Q-Hooks
(WH)



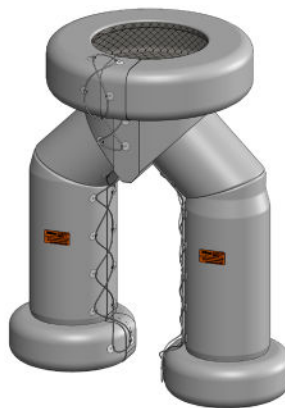
Wrap Spring
(WS)

QSK 50 - Floating Cummins Flange Inlets

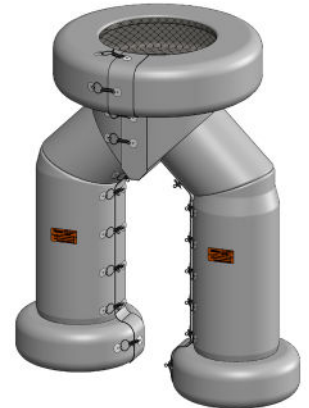
PART NUMBER	GEN SET MODEL	WYE SIZES
WV-51-1206-K50GAA-H36	DQGAA 1250	6 x 6 x 12
WV-51-1406-K50GAB-H36	DQGAB 1250	6 x 6 x 14
WV-51-1406-K50GAB-H36	DQGAB 1500	6 x 6 x 14



Wrap Velcro
(WV)



Wrap Q-Hooks
(WH)



Wrap Spring
(WS)

QSK 60

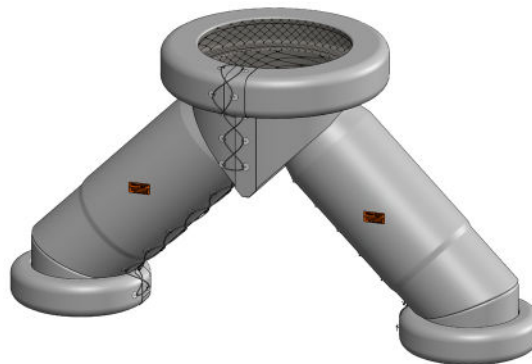
QSK 60 - Floating ANSI Flange Inlets		
PART NUMBER	GEN SET MODEL	WYE SIZES
WV-51-1410-K60KAA-H36	DQKAA 1750	10 x 10 x 14
WV-51-1610-K60KAA-H36	DQKAA 1750	10 x 10 x 16
WV-51-1610-K60KAB-H36	DQKAB 2000	10 x 10 x 16
WV-51-1810-K60KAB-H36	DQKAB 2000	10 x 10 x 18
WV-51-1810-K60KH-H36	DQKH 2250	10 x 10 x 18
WV-51-2010-K60KH-H36	DQKH 2250	10 x 10 x 20



Wrap Velcro
(WV)



Wrap Spring
(WS)



Wrap Q-Hooks
(WH)

QSK 78 - Floating ANSI Flange Inlets		
MODEL/PART NUMBER	GEN SET MODEL	WYE SIZES
WV-51-1812-K78LA-H42	DQLA 2700	12 x 12 x 18
WV-51-2012-K78LA-H42	DQLA 2700	12 x 12 x 20
WV-51-2212-K78LA-H42	DQLA 2700	12 x 12 x 22
WV-51-2412-K78LAH42	DQLA 2500	12 x 12 x 24
WV-51-1812-K78LC-H42	DQLA 2500	12 x 12 x 18
WV-51-2012-K78LC-H42	DQLA 2500	12 x 12 x 20
WV-51-2212-K78LC-H42	DQLA 2500	12 x 12 x 22
WV-51-2412-K78LC-H42	DQLA 2500	12 x 12 x 24



Wrap Velcro
(WV)

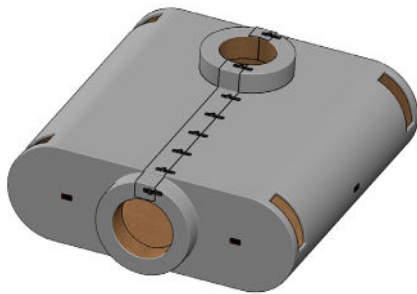


Wrap Spring
(WS)

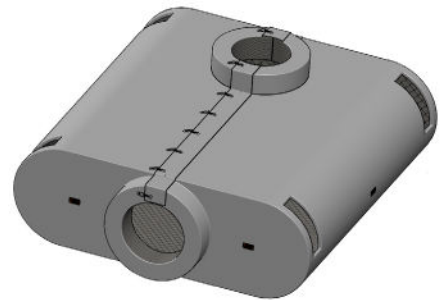


Wrap Q-Hooks
(WH)

Critical Grade			Hospital Grade		Extreme Grade	
600C	601C	602C	601H	602H	601E	602E
600C2-WV-04	601C2-WV-04	602C2-WV-04	601H2-WV-04	602H2-WV-04	601E2-WV-04	602E2-WV-04
600C2-WV-05	601C2-WV-05	602C2-WV-05	601H2-WV-05	602H2-WV-05	601E2-WV-05	602E2-WV-05
600C2-WV-06	601C2-WV-06	602C2-WV-06	601H2-WV-06	602H2-WV-06	601E2-WV-06	602E2-WV-06
600C2-WV-08	601C2-WV-08	602C2-WV-08	601H2-WV-08	602H2-WV-08	601E2-WV-08	602E2-WV-08
600C2-WV-10	601C2-WV-10	602C2-WV-10	601H2-WV-10	602H2-WV-10	601E2-WV-10	602E2-WV-10
600C2-WV-12	601C2-WV-12	602C2-WV-12	601H2-WV-12	602H2-WV-12	601E2-WV-12	602E2-WV-12
600C2-WV-14	601C2-WV-14	602C2-WV-14	601H2-WV-14	602H2-WV-14	601E2-WV-14	602E2-WV-14
600C2-WV-16	601C2-WV-16	602C2-WV-16	601H2-WV-16	602H2-WV-16	601E2-WV-16	602E2-WV-16
600C2-WV-18	601C2-WV-18	602C2-WV-18	601H2-WV-18	602H2-WV-18	601E2-WV-18	602E2-WV-18
600C2-WV-20	601C2-WV-20	602C2-WV-20	601H2-WV-20	602H2-WV-20	601E2-WV-20	602E2-WV-20



Wrap Velcro
(WV)

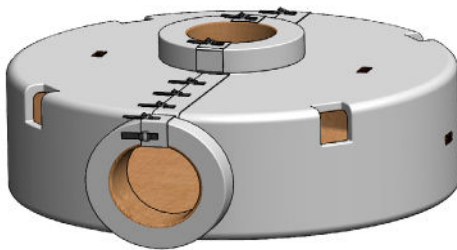


Wrap Spring
(WS)

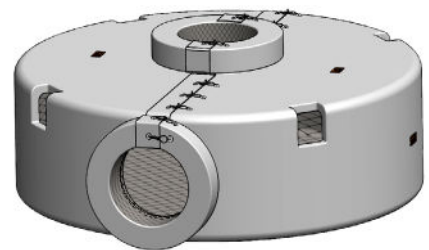


Wrap Q-Hooks
(WH)

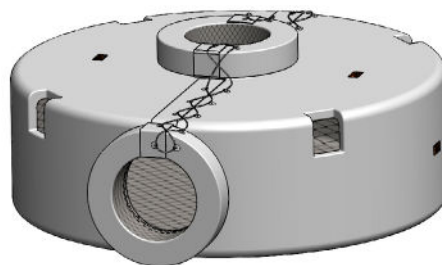
Residential Grade		Critical Grade			Hospital Grade	
700R	701R	700C	701C	702C	701H	702H
700R2-WV-04	701R2-WV-04	700C2-WV-04	701C2-WV-04	702C2-WV-04	701H2-WV-04	702H2-WV-04
700R2-WV-05	701R2-WV-05	700C2-WV-05	701C2-WV-05	702C2-WV-05	701H2-WV-05	702H2-WV-05
700R2-WV-06	701R2-WV-06	700C2-WV-06	701C2-WV-06	702C2-WV-06	701H2-WV-06	702H2-WV-06
700R2-WV-08	701R2-WV-08	700C2-WV-08	701C2-WV-08	702C2-WV-08	701H2-WV-08	702H2-WV-08
700R2-WV-10	701R2-WV-10	700C2-WV-10	701C2-WV-10	702C2-WV-10	701H2-WV-10	702H2-WV-10
700R2-WV-12	701R2-WV-12	700C2-WV-12	701C2-WV-12	702C2-WV-12	701H2-WV-12	702H2-WV-12
700R2-WV-14	701R2-WV-14	700C2-WV-14	701C2-WV-14	702C2-WV-14	701H2-WV-14	702H2-WV-14
700R2-WV-16	701R2-WV-16	700C2-WV-16	701C2-WV-16	702C2-WV-16	701H2-WV-16	702H2-WV-16
700R2-WV-18	701R2-WV-18	700C2-WV-18	701C2-WV-18	702C2-WV-18	701H2-WV-18	702H2-WV-18



Wrap Velcro
(WV)

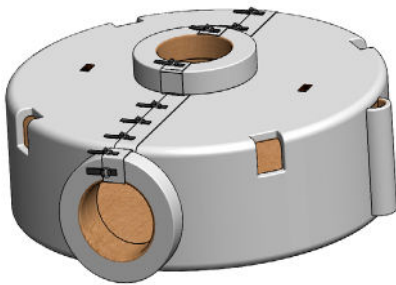


Wrap Spring
(WS)

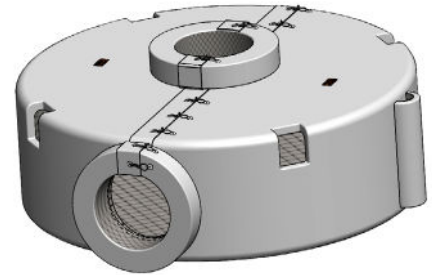


Wrap Q-Hooks
(WH)

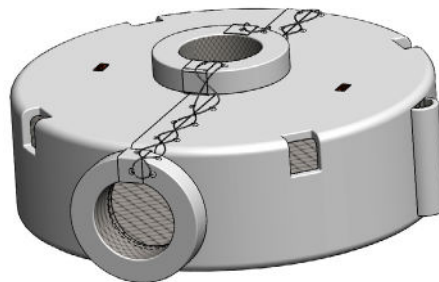
Residential Grade	Critical Grade
701SAR	701SAC
701SAR2-WV-04	701SAC2-WV-04
701SAR2-WV-05	701SAC2-WV-05
701SAR2-WV-06	701SAC2-WV-06
701SAR2-WV-08	701SAC2-WV-08
701SAR2-WV-10	701SAC2-WV-10
701SAR2-WV-12	701SAC2-WV-12
701SAR2-WV-14	701SAC2-WV-14
701SAR2-WV-16	701SAC2-WV-16
701SAR2-WV-18	701SAC2-WV-18



Wrap Velcro
(WV)

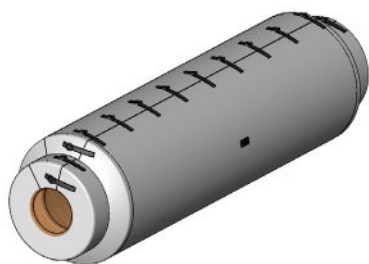


Wrap Spring
(WS)

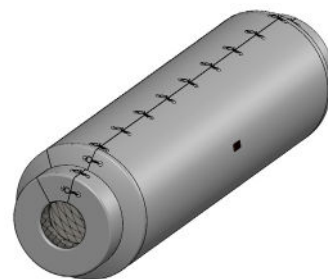


Wrap Q-Hooks
(WH)

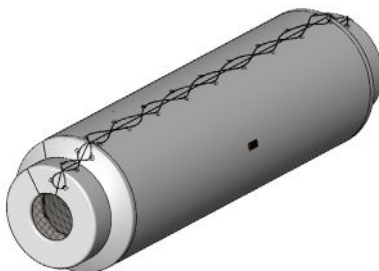
Industrial Grade	Residential Grade	Critical Grade	Hospital Grade	Extreme Grade
900I	900R	900C	900H	900E
900I2-WV-04	900R2-WV-04	900C2-WV-02	900H2-WV-04	900E2-WV-04
900I2-WV-05	900R2-WV-05	900C2-WV-025	900H2-WV-05	900E2-WV-05
900I2-WV-06	900R2-WV-06	900C2-WV-03	900H2-WV-06	900E2-WV-06
900I2-WV-08	900R2-WV-08	900C2-WV-035	900H2-WV-08	900E2-WV-08
900I2-WV-10	900R2-WV-10	900C2-WV-04	900H2-WV-10	900E2-WV-10
900I2-WV-12	900R2-WV-12	900C2-WV-05	900H2-WV-12	900E2-WV-12
900I2-WV-14	900R2-WV-14	900C2-WV-06	900H2-WV-14	900E2-WV-14
	900R2-WV-16	900C2-WV-08	900H2-WV-16	900E2-WV-16
	900R2-WV-18	900C2-WV-10	900H2-WV-18	900E2-WV-18
	900R2-WV-20	900C2-WV-12	900H2-WV-20	900E2-WV-20
	900R2-WV-22	900C2-WV-14	900H2-WV-22	900E2-WV-22
	900R2-WV-24	900C2-WV-16	900H2-WV-24	900E2-WV-24
		900C2-WV-18		
		900C2-WV-20		
		900C2-WV-22		
		900C2-WV-24		



Wrap Velcro
(WV)



Wrap Spring
(WS)



Wrap Q-Hooks
(WH)



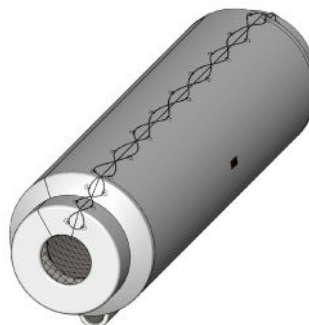
Residential Grade	Critical Grade	Hospital Grade
90SAR	90SAC	90SAH
90SAR-WV-04	90SAC-WV-04	90SAH-WV-04
90SAR-WV-05	90SAC-WV-05	90SAH-WV-05
90SAR-WV-06	90SAC-WV-06	90SAH-WV-06
90SAR-WV-08	90SAC-WV-08	90SAH-WV-08
90SAR-WV-10	90SAC-WV-10	90SAH-WV-10
90SAR-WV-12	90SAC-WV-12	90SAH-WV-12
90SAR-WV-14	90SAC-WV-14	90SAH-WV-14
90SAR-WV-16	90SAC-WV-16	90SAH-WV-16
90SAR-WV-18	90SAC-WV-18	90SAH-WV-18
90SAR-WV-20	90SAC-WV-20	90SAH-WV-20
90SAR-WV-22	90SAC-WV-22	90SAH-WV-22
90SAR-WV-24	90SAC-WV-24	90SAH-WV-24



Wrap Velcro
(WV)



Wrap Spring
(WS)



Wrap Q-Hooks
(WH)

Read through the entire manual before proceeding with installation.

Any procedures presented in this guide are suggestions only, and it is the responsibility of the owner/operator to ensure that the installation is done only by trained, qualified individuals, and performed according to all applicable codes including, but not limited to, local codes for your municipality, city, county and state; this includes all electrical and mechanical work. All workers must be trained in the proper safety procedures and appropriate PPE and attire must be worn at all times.

INSTALLATION

1. Prior to unpacking, check all components for shipping damage.
2. Remove all blankets from the box.
3. Lay all pieces on flat surface while putting them in position as shown on assembly drawing. Blankets need to be flattened and stretched on a clean, flat surface to maintain their proper shape. Handle blankets with care during this procedure to avoid any damage to the fabric.
4. Ensure components are cool to touch and all adjacent equipment is properly locked out.
5. Ensure all proper PPE is used.
6. All surfaces must be clean and dry.
 - a) Do not use chloride or halide-based cleaners.
7. Do not expose to hot work or open flames.
8. Do not rig or mount any straps to covers.
9. Do not pinch or compress covers with mounting fixtures/equipment during installation. This may cause premature failure or limit protective ability.
10. Start installation of blankets while referring to the assembly drawing [blankets are numbered 1/...2/...3..., etc.]
11. Do not tightly secure blankets until all pieces are installed.
12. Starting with item 1 tighten each part of assembly for final position.

Thank you for choosing inExhaust as your exhaust system components solution!
For any questions, please contact us at sales@inExhaust.com.



**Example of a Removable
Thermal Insulation
Cover on a Silencer**

- Please review the quotation/order when received to ensure accuracy on agreed price and lead time.
- Multiple parts and/or large quantity parts may extend lead times.
- Custom parts that are quoted and then ordered are non-refundable, non-restockable, and non-returnable.
- Freight is Ex Works (EXW) Factory.
- Minimum order \$50.

Delivery from inExhaust™, hereafter referred to as Manufacturer, is defined as the date/time the equipment leaves the Manufacturer's shipping dock.

Manufacturer provides two options for shipping terms. **By default, the Manufacturer shall choose Option 1 unless directed by the Purchaser or otherwise specified.**

OPTION 1

Shipment is Ex Works (EXW) Factory, Freight Prepaid & Add

- a) The Manufacturer pays and invoices Purchaser for freight charges
- b) The Purchaser assumes the title and control of the equipment at the moment the carrier signs the bill of lading
- c) The Manufacturer reserves the right to select the freight carrier
- d) The Purchaser is responsible for filing and settling claims for loss or damage of equipment

OPTION 2

Shipment is Ex Works (EXW) Origin Freight Collect.

- a) The Purchaser pays and bears the freight charges
 - b) The Purchaser assumes title and control of the equipment at the moment the carrier signs the bill of lading
 - c) The Purchaser is responsible for filing and settling claims for loss or damage of equipment
- All drawings and documents furnished to Purchaser by the Manufacturer is the work product of the Manufacturer who shall be deemed the author and shall retain all common law, statutory law and other rights of ownership, including copyrights. Purchaser may make and retain copies for informational purposes only.
 - The Manufacturer will endeavor to make shipment of orders as scheduled whenever possible. However, all shipment dates are approximate only, and the Manufacturer reserves the right to adjust shipment schedules at its sole discretion.

UNDER NO CIRCUMSTANCES WILL THE MANUFACTURER BE RESPONSIBLE OR INCUR ANY LIABILITY FOR COSTS OR DAMAGES OF ANY NATURE (WHETHER GENERAL, CONSEQUENTIAL, AS A PENALTY OR LIQUIDATED DAMAGES, OR OTHERWISE) ARISING OUT OF OR OWING TO ANY DELAYS IN DELIVERY.

Origin Freight Collect Delay of Shipment

When the equipment is ready for shipment and shipment is delayed or postponed through any causes, or at Purchaser's request, the Purchaser shall:

- Pay the Manufacturer's invoice for the equipment as per payment terms,
- Arrange for storage of the equipment covered by this agreement other than at the Manufacturer's facility, unless by separate written agreement the Manufacturer shall agree to store the equipment and the charges for such storage.
- The Manufacturer warrants to the Purchaser that it will repair or replace at Manufacturer's option, any equipment, or

CONTINUED

parts of equipment, which, in the Manufacturer's judgment is defective in material or workmanship for a period of one (1) year after the date of shipment from the Manufacturer's facility.

- Equipment, accessories and other parts and components not manufactured by the Manufacturer are warranted only to the extent of and by the original manufacturer's warranty to the Manufacturer, and in no event shall such other manufacturer's warranty create any more extensive obligations of the Manufacturer to the Purchaser than the Manufacturer's warranty covering equipment manufactured by the Manufacturer.

NOTE: Upon receipt of shipment, customer is responsible for inspection of items. Most carriers require immediate notification of damage. This means inspection must be made at time of delivery and any damage must be noted on the carrier's paperwork. A signature without mention of damage is considered "clear" by the carrier and will not be covered under insurance.

Any missing or damaged goods must be reported in writing to the vendor within 30 days from date of receipt. Lack of notification within 30 days will be considered as complete and satisfactory delivery of goods.

Thank you for choosing inExhaust as your exhaust system components solution!
For any questions, please contact us at sales@inExhaust.com.

inExhaust™ reserves the right to change the contents without notice. We do make every effort to have the most recent documents on our website. For latest revision please contact inExhaust™.

This document is also available on our website: www.inExhaust.com



inExhaust™, hereafter referred to as Manufacturer, warrants to the Purchaser that it will repair or replace at the Manufacturer's option, any equipment, or parts of equipment, which, in the Manufacturer's judgment is defective in material or workmanship for a period of one (1) year after the date of shipment from the Manufacturer's facility.

Defects or failure due to improper or careless storage, handling, installation, non-manufacturing welding/hot-work, application, testing/cycling without correct amount of time to allow system to warm up stabilize, evaporate combustion moisture and improper moisture draining either from condensation, emission or environmental introduction of moisture inside exhaust components exclude Manufacturer from upholding warranty.

Other exclusions include undisclosed/unspecified/alternate application, or corrosion accelerated due to smog, salinity, or other corrosive environments or combustion emissions (i.e. alternative fuel sources), poor or inadequate maintenance, or acts of God.

Damage from backfires, or from other malfunctioning engine conditions is not covered. Damage from excessive exhaust temperature beyond information provided at time of quote is not covered. For exhaust temperatures near 1000F or higher purchaser must disclose intention to externally insulate exhaust products especially with carbon steel as material of construction. Damage from other chemical or flammable substances encountering exhaust products is not covered.

Equipment, accessories and other parts and components sold by but not manufactured by the Manufacturer are warranted only to the extent of and by the original manufacturer's warranty to the Manufacturer, and in no event shall such other manufacturer's warranty create any more extensive obligations of the Manufacturer to the Purchaser other than the Manufacturer's warranty covering equipment manufactured by the Manufacturer. Manufacturer does not warrant any labor for removal, re-installation or maintenance of components.

SHIPPING

Manufacturer will endeavor to make shipment of orders as scheduled. However, all shipment dates are approximate only, and the Manufacturer reserves the right to adjust shipment schedules at its sole discretion.

No liability is accepted for return transportation charges, following the repair or replacement, or for re-installation cost. No other expressed or implied warranties exist in the absence of special written agreement between the consumer and Manufacturer.

Under no circumstances will the Manufacturer be responsible or incur any liability for costs or damages of any nature (whether general, consequential, as a penalty or liquidated damages, or otherwise) arising out of or owing to any delays in delivery.

THE MANUFACTURER SHALL NOT BE LIABLE FOR ANY SPECIAL, INDIRECT, INCIDENTAL, DELAY OR CONSEQUENTIAL DAMAGES, OR FOR LOSS, DAMAGE OR EXPENSE, DIRECTLY OR INDIRECTLY ARISING FROM THE USE OF THE EQUIPMENT, SPARE OR REPLACEMENT PARTS, OR FROM ANY OTHER CAUSE WHETHER BASED ON WARRANTY (EXPRESSED OR IMPLIED) OR TORT OR CONTRACT AND THE MANUFACTURER'S TOTAL LIABILITY SHALL NOT EXCEED THE PURCHASE PRICE, regardless of any advices or recommendations that may have been rendered concerning the purchase, installation or use of the equipment.

GOVERNING LAW

This agreement is made and entered in the State of Nebraska, County of Lancaster, and shall be construed and interpreted in accordance with the laws of the State of Nebraska (including the provisions of the Nebraska Uniform Commercial Code), without regard to its conflict of law's provisions. Regarding any disputes which arise hereunder,

Purchaser hereby submits to the exclusive jurisdiction and venue of the District Court of Lancaster County, Nebraska or the United States District Court for the District of Nebraska. Purchaser also agrees not to bring any action or proceeding arising out of this Agreement in any other court or jurisdiction. Purchaser waives any defense of inconvenient forum to the maintenance of any action or proceeding so brought and waives any bond, surety, or other security that might be required of the Manufacturer.

RETURN POLICY

Written notice must be given to Manufacturer immediately upon discovery of any defect. All returned products must be pre-approved in writing by Manufacturer and all return shipments must be prepaid by the Purchaser Ex Works (EXW) and identified with Return Material Authorization (RMA) number issued by Manufacturer. A 35% restocking fee will be made on goods returned within 6 months of shipment.

All defective products must be returned to receive a no-cost replacement. If defective components are not returned, Purchaser must pay for replacement. This can only be subjugated by written approval from Manufacturer.

NOTE: Upon receipt of shipment, customer is responsible for inspection of items. Most carriers require immediate notification of damage. This means inspection must be made at time of delivery and any damage must be noted on the carrier's paperwork. A signature without mention of damage is considered "clear" by the carrier and will not be covered under insurance.

Any missing or damaged goods must be reported in writing to the vendor within 30 days from date of receipt. Lack of notification within 30 days will be considered as complete and satisfactory delivery of goods.

See Terms & Conditions for details.

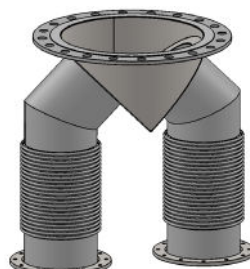
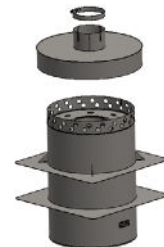
Thank you for choosing inExhaust as your exhaust system components solution!
For any questions, please contact us at sales@inExhaust.com.

inExhaust™ reserves the right to change the contents without notice. We do make every effort to have the most recent documents on our website. For latest revision please contact inExhaust™.

This document is also available on our website: www.inExhaust.com



We are proud to announce that our Lincoln, Nebraska facility achieved ISO 2001:2015 certification on October 23, 2018!





YOUR EXHAUST SYSTEM COMPONENTS SOLUTION

inExhaust.com | 402.322.7022 | sales@inExhaust.com

©2016-2021 Innovative Exhaust Solutions, Inc.